

SC Workers' Compensation Commission



1333 Main Street, Suite 500
P.O. Box 1715
Columbia, South Carolina 29202
www.wcc.sc.gov



South Carolina Workers' Compensation Commission

The South Carolina Industrial Commission was created on September 1, 1935, to administer and enforce South Carolina's first workers' compensation law.

Throughout the years the law has been amended by statute, defined by case law, and altered through administrative policies and procedures; however, the basic premise and purpose of the law has remained unaltered.

In May, 1986, the name of the Industrial Commission was changed to the more descriptive S.C. Workers' Compensation Commission.

The Commission works closely with the Governor, the General Assembly, and the Commission's many constituents to ensure that the workers' compensation system is fair, equitable, and responsive to the needs of the citizens of S.C.



South Carolina Workers' Compensation Commission

Commissioners



T. Scott Beck
Chairman
Term Expires
June 30, 2020



Susan S. Barden
Term Expires
June 30, 2022



Melody L. James
Term Expires
June 30, 2022



Aisha Taylor
Term Expires
June 30, 2020



Avery B. Wilkerson, Jr.
Term Expires
June 30, 2020



Gene McCaskill
Term Expires
June 30, 2018



Michael R. Campbell II
Term Expires:
June 30, 2018



Commissioners

The 7 Commissioners are appointed by the Governor with the advice and consent of the Senate for serve six-year staggered terms.

The Chairman is appointed by the Governor for a 2-year term with the advice and consent of the Senate. The Chairman serves as the chief executive officer of the Commission



South Carolina Workers' Compensation Commission

The Commission is responsible for administering the South Carolina Workers' Compensation Act.

The Act serves to relieve employers of liability from common law suits involving negligence in exchange for becoming responsible for medical costs and loss wages of on-the-job injuries regardless of fault.



Mission Statement

“To provide an equitable and timely system of benefits to injured workers and to employers in the most responsive, accurate, and reliable manner possible.”



System Stakeholders

Employers

Employees

Insurance Carriers

Medical Service Providers

Attorneys

Uninsured Employers Fund



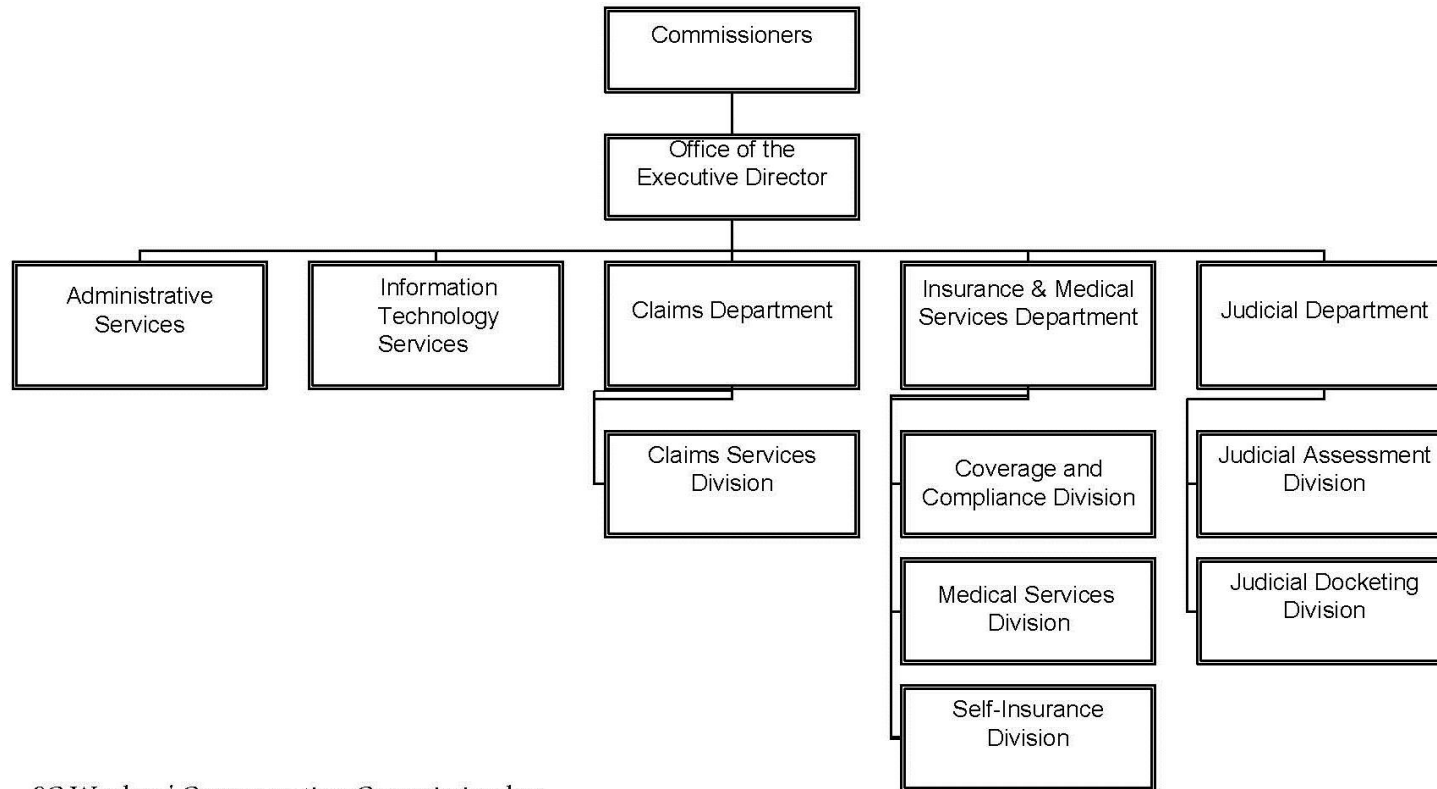
South Carolina Workers' Compensation Commission

These services are delivered by the Commission adhering to the agency's five basic objectives:

- 1. Provide sure, prompt, and reasonable income and medical benefits to work-related accident victims, or income benefits to their dependents, regardless of fault;**
- 2. Provide an exclusive remedy and reduce court delays, costs and judicial workloads arising out of personal injury litigation;**
- 3. Provide an exclusive remedy and reduce delays, costs and judicial workloads arising out of personal injury litigation;**
- 4. Control the cost of adjudicating the cases to all parties by processing the claims in an efficient and effective manner and reducing time for a case to be heard and the number of cases appealed;**
- 5. Control the overall cost to the system while preserving access to service by adopting fair and reasonable medical fee schedules.**



South Carolina Workers' Compensation Commission



SC Workers' Compensation Commission has a total of 56 employees. 56 are FTEs of which 8 are unclassified; 46 are classified, and 2 temporary.



Annual Operating Budget

FY2015-16 - \$5.6 million

FY2016-17 - \$5.5 million

Employees

56 FTEs



Commissioners

The Commissioners are responsible for hearing and determining all contested cases, approving settlements and hearing appellate reviews. The State is divided into seven districts. Each Commissioner is assigned a different district two months.



Executive Director

Gary M. Cannon

gcannon@wcc.sc.gov

Chief operating officer of the Commission; appointed by and serves at the pleasure of the seven Commissioners.

Responsible for general supervision and management of the Commission's five major departments and well as the internal operations to include finance, personnel, staff development and training, purchasing, inventory and supply control, facilities maintenance, motor vehicles, and mail.



Claims Department

Sonji Spann, Director

Sspann@wcc.sc.gov

Responsible for the management of all reported accidents and non-judicial matters relating to individual claims; monitors claims for accuracy and conformity with the rights and benefits established by law; manages all active and closed claims records and conducts research as requested.



Insurance and Medical Services Department

Wayne Ducote, Director

wducote@wcc.sc.gov

Records and monitors required workers' compensation insurance coverage; investigates matters of non-compliance and enforces compliance with the law; administers the workers' compensation self-insurance program; establishes fee schedules for doctors and hospitals and resolves disputed bills.



Judicial Department

Amy Bracy, Director

Abracy@wcc.sc.gov

Prepares and schedules all contested matters – viewings and informal conferences – to be heard by a Commissioner; coordinates cases heard by Appellate Panels and prepares and transmits cases appealed to the court system.



South Carolina Workers' Compensation Commission

Information Services Department

Sandee Sprang, IT Director
ssprang@wcc.sc.gov

Duane Earles, Business Analyst
dearles@wcc.sc.gov

Elizabeth Schinke, Business Analyst
eschinke@wcc.sc.gov

Responsible for coordination and management of the flow of information throughout the Commission; responsible for all data processing and information systems development and maintenance.



South Carolina Workers' Compensation Commission

**Please visit the Commission's
website for valuable information
and helpful links.**

www.wcc.sc.gov